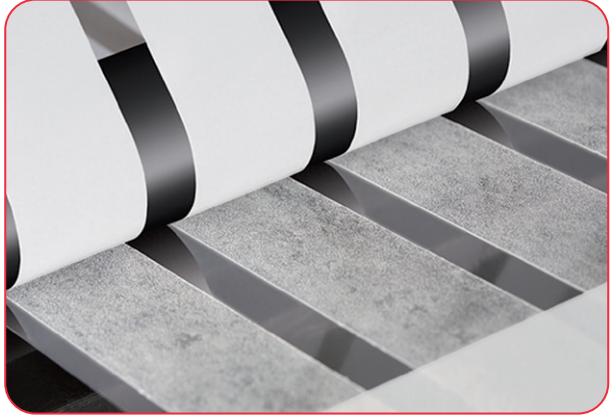
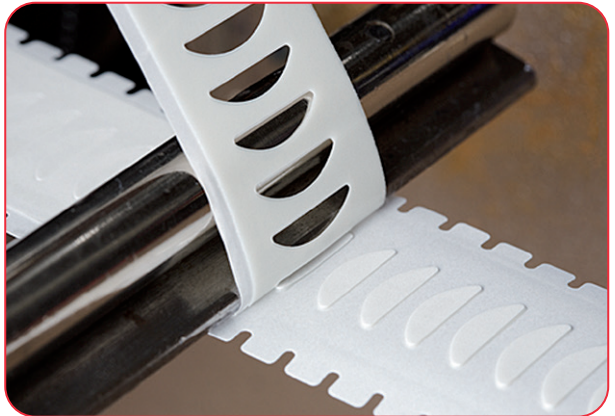


Getting adhesiveness into shape.

▶ BONDING



▶ PUNSHING



▶ FINISHING



MILESTONES FROM THE 20 PLUS YEAR COMPANY HISTORY.



Peter Zorowik Snr.



Klaus Kaiser



Peter Zorowik Jnr.

- 1988 Foundation of the company KMB Klebetechnik GmbH by Peter Zorowik Snr. and Klaus Kaiser in Gevelsberg
- 1991 The first international order – today, products from KMB are used the world over
- 1992 Relocation to the newly constructed company premises in Dortmund-Oestrich
- 1992 The first rotary press is installed
- 1992 Investment in the company's first rotary press with 500mm working width
- 1994 KMB becomes a listed supplier to the automotive industry
- 1998 The company expands and new accommodation is created for administration and production
- 1998 Peter Zorowik Jnr., son of the co-founder Peter Zorowik Snr., appointed technical director
- 2000 First certification by the quality management system (DQS)
- 2008 The machine inventory is extended, providing the possibility of tool-free punching
- 2008 The proprietary development K-ALUDENSE® is patented
- 2009 STRIPE-LIFT®, a finishing technique for adhesive tapes, is awarded a patent
- 2009 TÜV certification (DIN EN ISO 9001)

KMB Klebetechnik GmbH

Breisenbachstr. 97
44357 Dortmund
Germany

Fon: 0049 (0) 231 - 93 50 10 - 0
Fax: 0049 (0) 231 - 93 50 10 - 33
E-Mail: info@kmb-klebetechnik.de
Web: www.kmb-klebetechnik.com



BONDING, PUNCHING, FINISHING. WE OFFER YOU A ONE-STOP SHOP.



The founders of KMB Klebetechnik GmbH, Klaus Kaiser and Peter Zorowik Snr., have been regarded since the 70s as specialists in the field of bonding technology and still run the company to this very day.

The company has had its headquarters in Dortmund since 1992. Since that date, this is where the company has based its administration, production, warehouse and facilities for quality assurance all under one roof.

Over time, KMB has earned itself a reputation as a reliable partner in a number of industries. Today, KMB solutions are used to great success the world over. Professional expertise, creativity and experience are just a few of the strengths of KMB Klebetechnik GmbH.

The company's mission is to always find the best solution for its customers. Therefore efficiency, practicality and cost-effectiveness always take priority.

You can also look up specific examples of our solutions online at: www.kmb-klebetechnik.com

WITH CAREFULLY SELECTED ADHESIVE MATERIALS, WE CREATE ADHESIVE BONDS, WHICH HAVE PROVEN THEIR WORTH IN NUMEROUS INDUSTRIES.

Adhesive bonds are being used increasingly in production processes. This is because they are suitable for use in a variety of fields and with various materials and surfaces, they can be matched perfectly to the desired functionality and technology. Furthermore, they present a low-cost alternative to traditional fixing techniques and are suitable for everyday use.

We work successfully for various companies in the fields of injection moulding, glassmaking, printing, automotive, electrical and electronics manufacturing as well as telecommunications and solar technology. It is not uncommon for our work to result in the creation of an entirely new product or manufacturing technique.

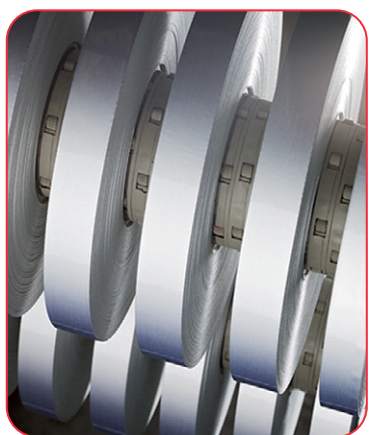


**WE CREATE BONDS –
PERMANENT OR EASILY SEPARABLE.
YOU DECIDE WHAT'S NEEDED.**

KMB always offers you the solution that optimally satisfies your needs. Double or single-sided, permanent or easily removable, in rolls or sheets – we apply an adhesive coat to the substrate just as you need it. In addition, we apply our many years of experience gained in countless projects work to your advantage.

Foam adhesive tapes are used today in many different ways - for example, in the automotive industry. This is because they are easy and clean to work with, adapt to any material-related differences, and permanently bond a variety of different materials with one another.

Depending on the particular requirements, materials with a whole range of different properties are available to us, and consequently also to our customers. In some cases, adhesive tapes have been and indeed still are specially developed/ adapted to meet specific needs.



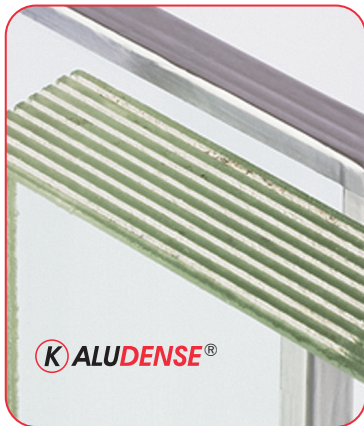
BONDING

EXAMPLES OF REAL-LIFE APPLICATIONS



HIGH BONDING STRENGTH FROM THE WORD GO.

K-MOUNT is ideally suited for bonding plastic components in numerous areas of manufacturing. It is particularly notable for the extremely thin layer of PE foam and exceptionally high tack. The visco-plastic foam core also creates extremely high shear strength. We supply you with K-MOUNT either on rolls with the desired width dimension or as mould stampings for rapid and precision processing.



PATENTED EDGE PROTECTION TAPE.

The patented edge protection tape K-ALUDENSE® has been specially developed by KMB for manufacturers of multi-layer and fire-resistant glazing. It permanently seals the edges of these glass panes and effectively keeps moisture out. This acrylate adhesive with a PE foam base does not “bleed” even when subjected to demanding conditions. K-ALUDENSE® is quick and easy to work with and is notable for its high tack.



EASIER TO WORK THANKS TO SLIPBAND.

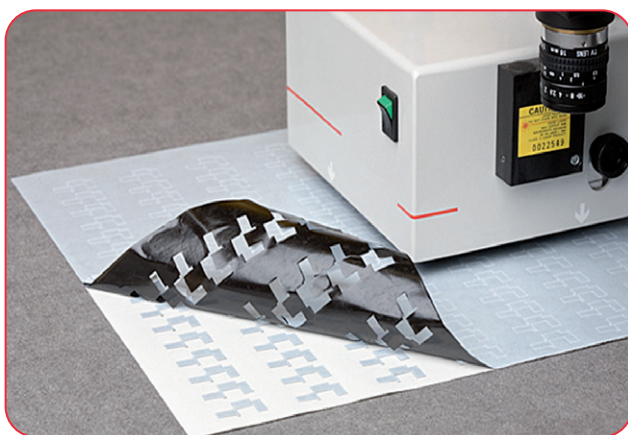
This development by KMB is the perfect complement to K-ALUDENSE®. Made from durable foil, this slip band solves two problems that confront fitters of multi-layer and fire-resistant glazing. Firstly, it protects the sensitive edge area. Secondly, it facilitates handling the heavy glass panes. The glass panes equipped with the slip band slide easily into the desired position.

WE PRODUCE FILIGREE MOULD STAMPINGS AND EXTRAORDINARY MATERIALS OF A CONSISTENT QUALITY.

Utmost precision is required when punching. The reason being that even small inaccuracies have consequences – for example, a stop in production can be caused if the hole punching for machine processing is not carried out cleanly.

KMB produces mould stampings from adhesive and non-adhesive materials and is happy to tackle even the most challenging of demands. We produce from roll to roll, from sheet to sheet, from roll to sheet or individual stampings for you. In addition, we process your individual coated materials as well as the materials of leading manufacturers (e.g. 3M, Avery, ATP).

With our tool-free punching process, we open up new possibilities for you. The process is designed specifically for small runs or specialised tasks. For example, we equip unsupported adhesive tapes with 'finger tabs'. These permit the easy separation of liners.



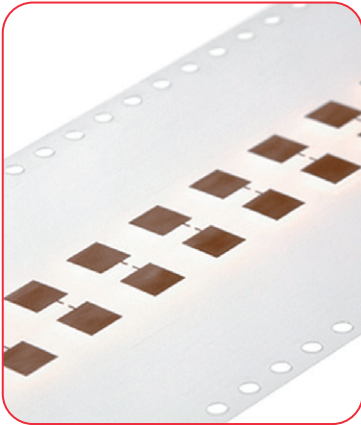
PUNCHING

EXAMPLES OF REAL-LIFE APPLICATIONS



THE HIGH ART OF PUNCHING.

Butyl has properties that make it ideally suited as a substrate material for seals: e.g. tremendously high gas impermeability, extremely low moisture absorption, elasticity and outstanding weathering resistance. The drawback: the soft, thick and extremely sticky mass even adheres to the cut edge. This makes punching out the inner ring cleanly a particularly difficult task. KMB has also solved this problem by devising its own unique method.



PRECISION IS OUR PRINCIPLE.

We also process non-adhesive material or material supplied by you. For example, for a manufacturer of chip cards, we provided this backing tape with applied copper with hole punchings on the left and right-hand edge. The holes were used during mechanical downstream processing as a guide for ensuring the precision connection of the chipcards with the pre-printed antennas. The slightest inaccuracy would have caused a machine breakdown.



STRIPE-LIFT® – OUR LATEST PATENT.

A great deal of technical know-how and specialist knowledge went into developing this patented method. This involves portioning the self-adhesive material on the roll itself into the amounts that are actually required for subsequent application. This eliminates the need for cutting to length. The tape always has the precise length that is required. The integrated perforations and the finger tabs allow the different sections of the tape to be cleanly separated without the need for tools.

ADHESIVE TECHNOLOGY AND MOULD STAMPINGS BECOME A SINGLE UNIT – THAT'S WHAT WE CALL FULL SERVICE.

Manufacturers of injection moulded parts especially appreciate our full service offer. We not only create perfect adhesive materials and punch them into shape - upon request, we will also equip injection-moulded parts with pre-punched adhesives, fit components together precisely or laminate your prefabricated elements.

Depending on the requirements, the tasks are performed either using our large machine inventory or manually by our trained personnel. We inform you which solution is most applicable and economical for your needs. Incidentally, if you finish your products yourself in-house, we will gladly take orders on an hourly wage basis in case of staff shortages. This enables you to remain flexible, save high fixed costs and ensures that you are able to deliver on time. It is always worth enquiring.



► FINISHING

EXAMPLES OF REAL-LIFE APPLICATIONS



YOUR ONE-STOP SHOP.

These badges were produced for the automotive industry. First of all, KMB produced stampings furnished with a double-sided adhesive foam tape.

These were subsequently applied by machine to the emblems provided. For cost-efficiency reasons, a machine was specially configured for this task. A finger tab can also be integrated as an option. This facilitates manual application at a later stage.



IN THE SPOTLIGHT: COST-EFFICIENCY.

KMB always keeps a close eye on cost-efficiency. This was also the case with the current example, which involved furnishing supplied injection moulded parts with double-sided adhesive tape. The nameplates were supplied by the manufacturer on boards comprising a number of blanks. KMB then furnished these cleanly and precisely with self adhesive in a single operation. Similarly, when it came to choosing the ideal adhesive, the customer took advantage of KMB's expertise.



TOOL-FREE PUNCHING.

KMB has developed a technique of punching even the finest filigree shapes and parts with exposed adhesive surfaces without any need for tools. This technique is ideally suited for small and medium-sized runs and delivers absolutely precise results from the first to the last stamping. Another typical application of tool-free punching is shown on the left: KMB provided this transfer film with a finger tab to facilitate separation.

OUR GREATEST STRENGTHS:
STATE-OF-THE-ART MACHINES, VAST EXPERIENCE,
PERSONAL COMMITMENT AND HIGHLY TRAINED STAFF.

We have a large machine inventory at our disposal so that we can complete your order precisely, economically and on time.

Material preparation

- 4 reel cutters (600 - 1,500 mm width)
- Automatic cut-off machine
- 3 sheet cutters up to 1,250 mm width (simultaneous cutting into lengths + laminating of materials)
- 2 laminators (700 mm and 1,250 mm width)

Production

- Cutting plotter (1,000 mm x 1,700 mm, for samples and low-volume production) for sheet materials
- 3 flat-bed punching machines (100 x 100 mm and 250 x 250 mm) for rolled materials
- Punching cylinder (560 mm x 770 mm) for sheet materials
- Cutter-creaser (1000 mm x 1400 mm) for sheet materials
- 6 rotary die-cutters (165, 330, 450 and 500 mm pass-band width) for rolled materials

Special features of our punching machines

- Planishing: Machine with flexographic printing unit, two UV screen printing units, two punching units (gang-punching possible) and continuous feeding
- Rotary die-cutting: 165 and 330 mm in duplicate, stampings up to a format of 300 mm x 1200 mm are possible
- **NEW!** Tool-free punching: working width 250 mm
Ideal for small to medium-sized runs, also for pre-printed labels made from the following materials: PET, paper and pre-stretched PP; permits punching, punching through, perforation, numbering and engraving in a single operation



TRUST IS GOOD – CHECKING IS INDISPENSIBLE. IT'S YOUR GUARANTEE OF HIGH QUALITY STANDARDS



We are aware of the responsibility we have for ensuring smooth operating procedures within your company. For this reason, we work only with materials whose quality we have scrutinised ourselves. Our machines are regularly maintained and conform to the latest standards of technology. Our staff is optimally trained for its tasks.

With our own, well-equipped laboratory, we ensure that our high quality standards are met. We are happy to provide corresponding documentation – for example, concerning adhesive strength and tensile values – on request.

KMB Klebtechnik GmbH is certified in accordance with the TÜV NORD quality management system as per DIN EN ISO 9001 and is a listed supplier to leading companies the world over.



The test certificates, technical data sheets and examples of other solutions are available for you to view online at:

www.kmb-klebtechnik.com





Getting adhesiveness into shape.

Over our more than twenty year company history, we have grown with our projects. At the same time, however, we have preserved the flexibility that an owner-operated, medium-sized enterprise affords. This allows us space for personal contact as well. This personal contact is especially important to us because new solutions and possibilities are often born out of dialogue.

Come talk to us about your particular application!



KMB Klebetechnik GmbH

Breisenbachstr. 97 • 44357 Dortmund
Germany

Fon: 0049 (0) 231 - 93 50 10 - 0

Fax: 0049 (0) 231 - 93 50 10 - 33

E-Mail: info@kmb-klebetechnik.de

Web: www.kmb-klebetechnik.com

